

# SkyTrak® Telehandlers

	8042	10042	10054
Rated Capacity @ 24" Load Center	8,000 lb (3,629 kg)	10,000 lb (4,536 kg)	10,000 lb (4,536 kg)
Max. Lift Height	41' 11" (12.78 m)	42' 1" (12.83 m)	53' 2" (16.21 m)
Capacity @ Max. Lift Height	6,000 lb (2,722 kg)	*6,000 lb (2,722 kg)	*4,000 lb (1,814 kg)
Max. Reach	26' 7" (8.10 m)	26' 6" (8.08 m)	*39' (11.89 m)
Capacity @ Max. Reach	1,800 lb (816 kg)	6,000 lb (2,722 kg)	3,000 lb (1,361 kg)
Approximate Operating Weight	25,950 lb (11,771 kg)	26,250 lb (11,907 kg)	27,200 lb (12,337 kg)
Length (less forks)	225.2" (5.72 m)	225.2" (5.72 m)	238.8" (6.07 m)
Width	98.2" (2.49 m)	102" (2.59 m)	102" (2.59 m)
Height	99.4" (2.52 m)	100.1" (2.54 m)	101.1" (2.57 m)
Wheelbase	119.5" (3.04 m)	119.5" (3.04 m)	119.5" (3.04 m)
Outside Turning Radius	156" (3.96 m)	164" (4.17 m)	164" (4.17 m)
Ground Clearance	17.3" (439 mm)	18" (457 mm)	18" (457 mm)
Drive	4 x 4	4 x 4	4 x 4
Engine	Cummins QSB4.5T	Cummins QSB4.5T	Cummins QSB4.5T
HP @ RPM	110 hp @ 2,500 rpm	110 hp @ 2,500 rpm	110 hp @ 2,500 rpm
Transmission	Powershift	Powershift	Powershift
Axle—Front	High-Bias, Limited Slip	High-Bias, Limited Slip	High-Bias, Limited Slip
Axle—Rear	Planetary	Planetary	Planetary
Steering	All-Wheel	All-Wheel	All-Wheel
Tires	13.00 x 24-12 Ply	17.50 x 25-12 Ply	17.50 x 25-12 Ply
Max. Travel Speed	20 mph (32 km/h)	20 mph (32 km/h)	20 mph (32 km/h)
Frame Tilt Left/Right	±10 degrees	±10 degrees	±10 degrees

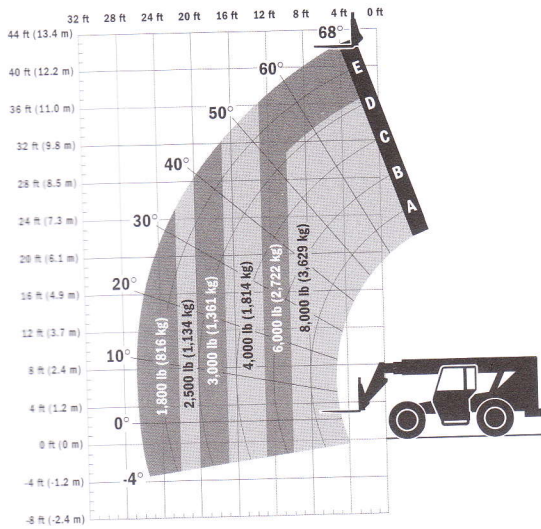
\*With outriggers down.



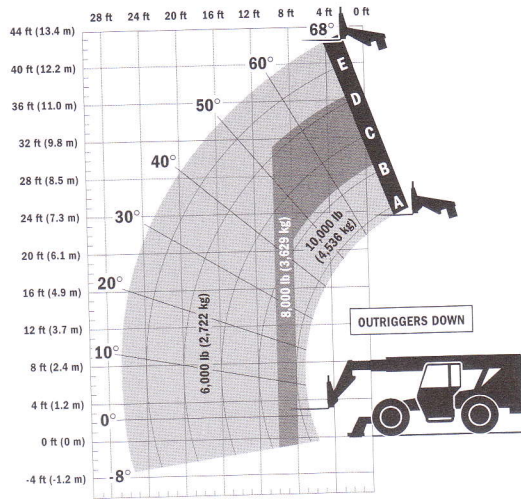
## SPECIAL FEATURES INCLUDE:

- *Stabil-Trak increases operator confidence.*
- *4-speed modulated transmission combined with high performance axles for increased production and maneuverability.*
- *Sealed bearings extend service intervals and lower maintenance costs.*

### 8042



### 10042



### 10054

