

# Specifications

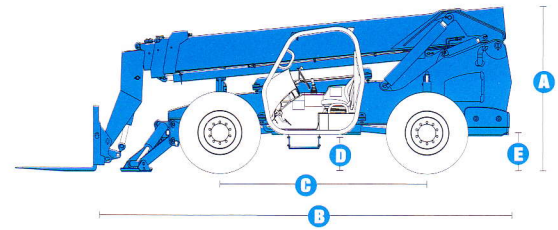
MODEL		GTH™-1056	
MEASUREMENTS		US	Metric
Maximum lift height		56 ft 10 in	17.32 m
Reach		42 ft	12.80 m
<b>A</b> Height, stowed		8 ft 6 in	2.59 m
<b>B</b> Length, stowed (without forks)		21 ft	6.40 m
Width		8 ft 6 in	2.59 m
<b>C</b> Wheelbase		10 ft 8 in	3.25 m
<b>D</b> Ground clearance, center		1 ft 10 in	0.56 m
<b>E</b> Ground clearance, axle		1 ft 6 in	0.46 m
Fork cross section		2.25 x 4 in	57 x 101 mm

PRODUCTIVITY		
Maximum lift capacity	10,000 lbs	4,536 kg
Lift capacity at maximum height	4,000 lbs	1,814 kg
Lift capacity at maximum reach	3,000 lbs	1,361 kg
Raise/Lower boom	13/12 sec	
Extend/Retract	16/15 sec	
Frame leveling	10° side to side	
Drive speed	17 mph	27 km/h
Draw bar pull	28,800 lbs	13,063 kg
Turning radius, outside (4WS)	13 ft 3 in	4.04 m
Auxiliary hydraulic flow	2-15 gpm	8-57 lpm
Auxiliary hydraulic pressure	3,200 psi	220 bar
Tires, standard size	14 x 24 in, 12 ply	

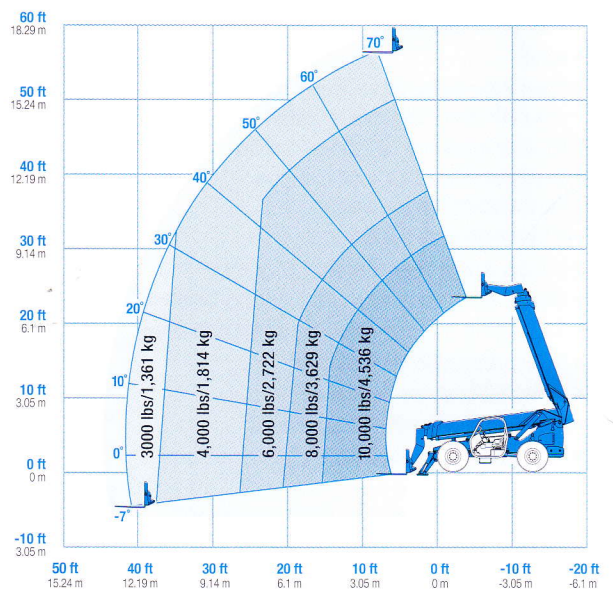
POWER	
Power source	Perkins 1104D-E44TA 4 cylinder diesel, 123 hp (95 kW) John Deere 4045HF48 5 4 cylinder diesel, 125 hp (93.2 kW)
Electrical system	System voltage 12 volt Alternator 95 amp Battery 1000 CCA at 0°F (-18°C)
Hydraulic tank capacity	44 gal 167 L
Hydraulic system capacity (w/tank)	55 gal 208 L
Fuel tank capacity	35 gal 132 L

WEIGHT		
Weight*	30,000 lbs	13,608 kg

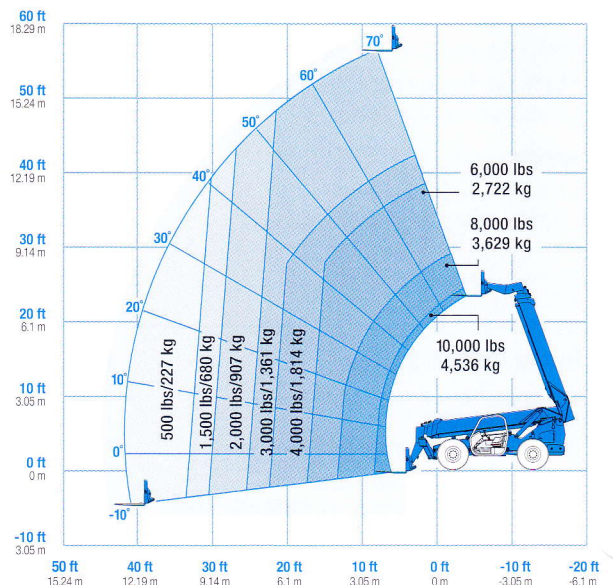
**STANDARDS COMPLIANCE** ANSI/ITSDF B56.6, ISO 3471, ISO 3449



### LOAD CHART GTH™-1056\*\*



With stabilizers down



With stabilizers up

\* Weight will vary depending on options and/or country standards.  
\*\* Load ratings vary depending on attachment.